

Products and Services 2016 and beyond!!



DEEP DOWN INC

Innovative Subsea Solutions

OTCQX:DP¹DW

Topside Equipment

Umbilical Installation Services

Proteus™ Active
Heave-compensators

- ✓ Engineering & Consulting
- ✓ Commissioning & Pumping
- ✓ Testing & Monitoring
- ✓ Construction Equipment
- ✓ Animation Services

BS Latchers® & Bend Stiffeners
Temporary Hang-off Mechanism



Installation Equipment

Installation Carousels

Installation Buoyancy

Drilling Riser Buoyancy

Distributed Pipeline, Flowline,
Riser & Umbilical Buoyancy

Oceanographic Buoyancy

Compliant Umbilical Splice

Engineered Buoyancy

NHU's

ROV's

Intervention Tooling

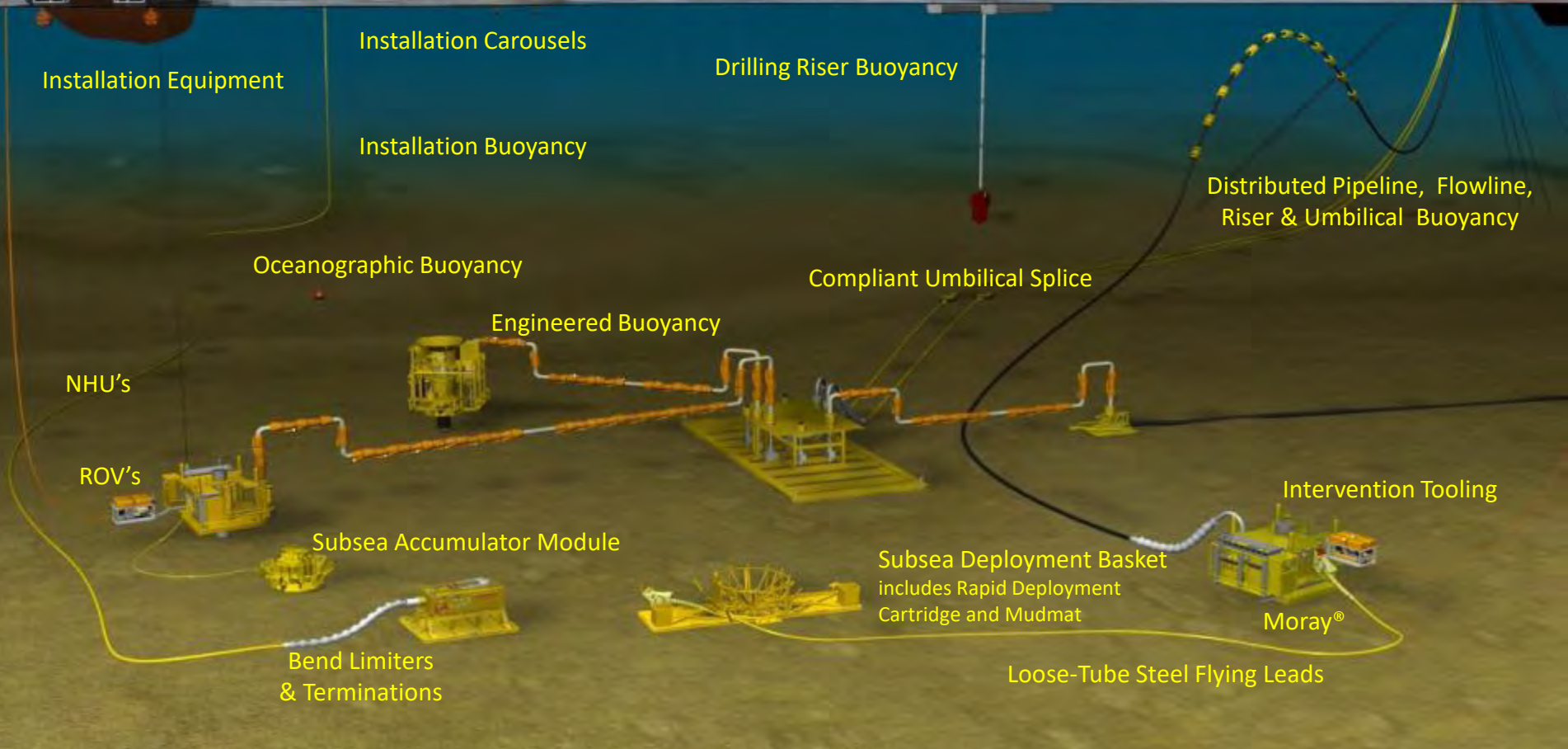
Subsea Accumulator Module

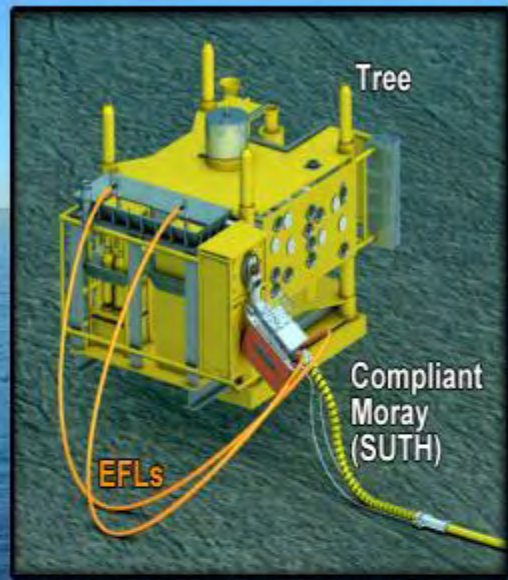
Subsea Deployment Basket
includes Rapid Deployment
Cartridge and Mudmat

Moray®

Bend Limiters
& Terminations

Loose-Tube Steel Flying Leads





EFL = Electronic Flying Lead

LSFL = Loose Steel Flying Lead

NHU = Non-Helical Umbilical (infield umbilical)

SUTH = Single Umbilical Termination Hub

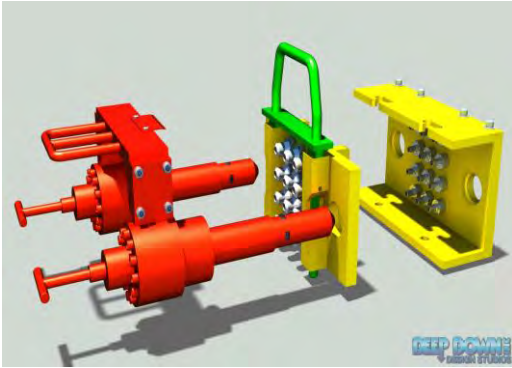


Products and Services

- Core Products & Services:
 - Testing, Monitoring, & Commissioning
 - Subsea Distribution System components
 - Equipment Storage and refurbishment
 - SIT
 - Fabrication of Installation equipment
 - Rental equipment and installation services
 - ROV Services
 - Marine Automation
 - Animation Services
- Steel Flying leads and the installation equipment and services
- NHU™ - Patented Mobile Steel Tube umbilical Manufacturing Plant – and Installation services
- Carousels and large installation equipment

Core Products & Services

Deep Down provides our customers with the unique combination of services and equipment for their project needs.



Animation



**Testing, Monitoring,
Commissioning**



ROV



**Subsea Distribution
Systems**

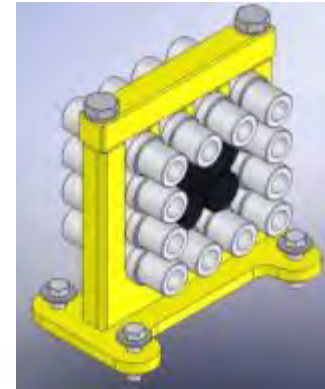
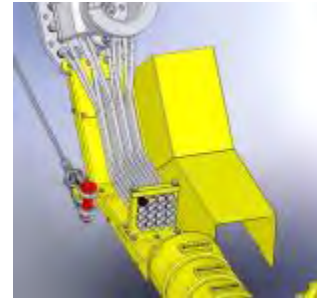


Automation



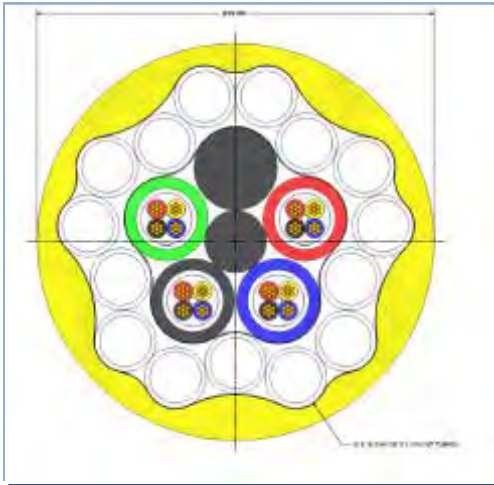
SIT

Patented Steel Flying Leads



- Easier to Install
- Stronger construction
- Several Installation Methods

NHU™ (Non Helical Umbilical) - Steel Infield Umbilicals



- Patented Mobile Operation- read further-
- Place anywhere in world using local content
- Up to 10 miles long
- Modular Installation systems using local vessels already on contract
- Building in country saves time and money

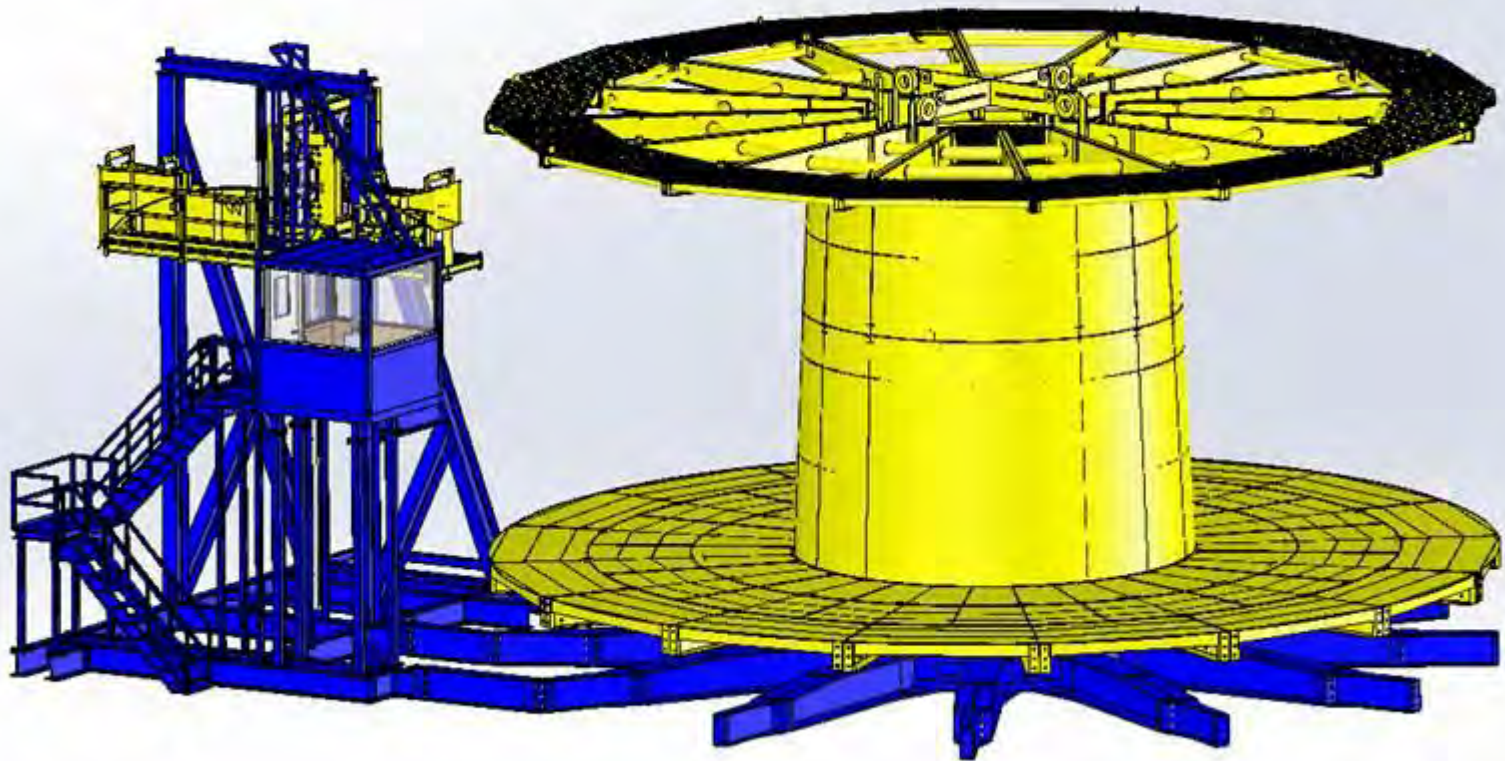


Umbilical Carousel Technologies



- Fully scalable carousel system built to handle 1,000 MT to 7,500 MT [9000 MT designed]
- Now selling Carousel #5 for approximately \$4M
- *“Innovation Winner” for the ASME Woelfel Best Engineering Achievement Award from the International Petroleum Technology Institute*

1500 MT Offshore Carousel



Carousel Delivered 7/1/15



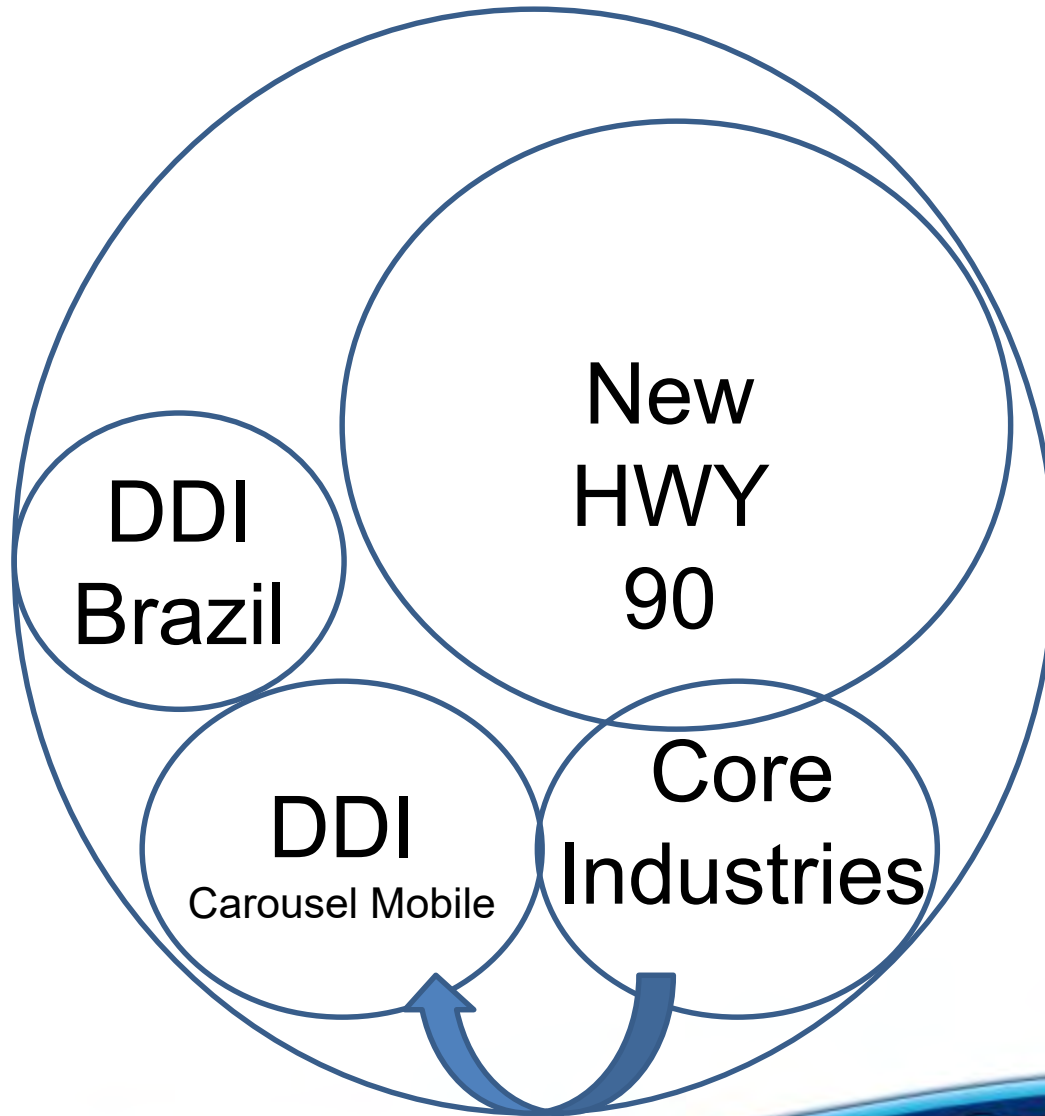
Deep Down Serves Operators, Installation Contractors & OEMs

- Deep Down provides its service and technology to most major integrated oil & gas companies, large independents, and national oil companies
- International and regional Installation Contractors
- Original equipment manufacturers OEMs



See our website-

USA - DDI Extended Facilities

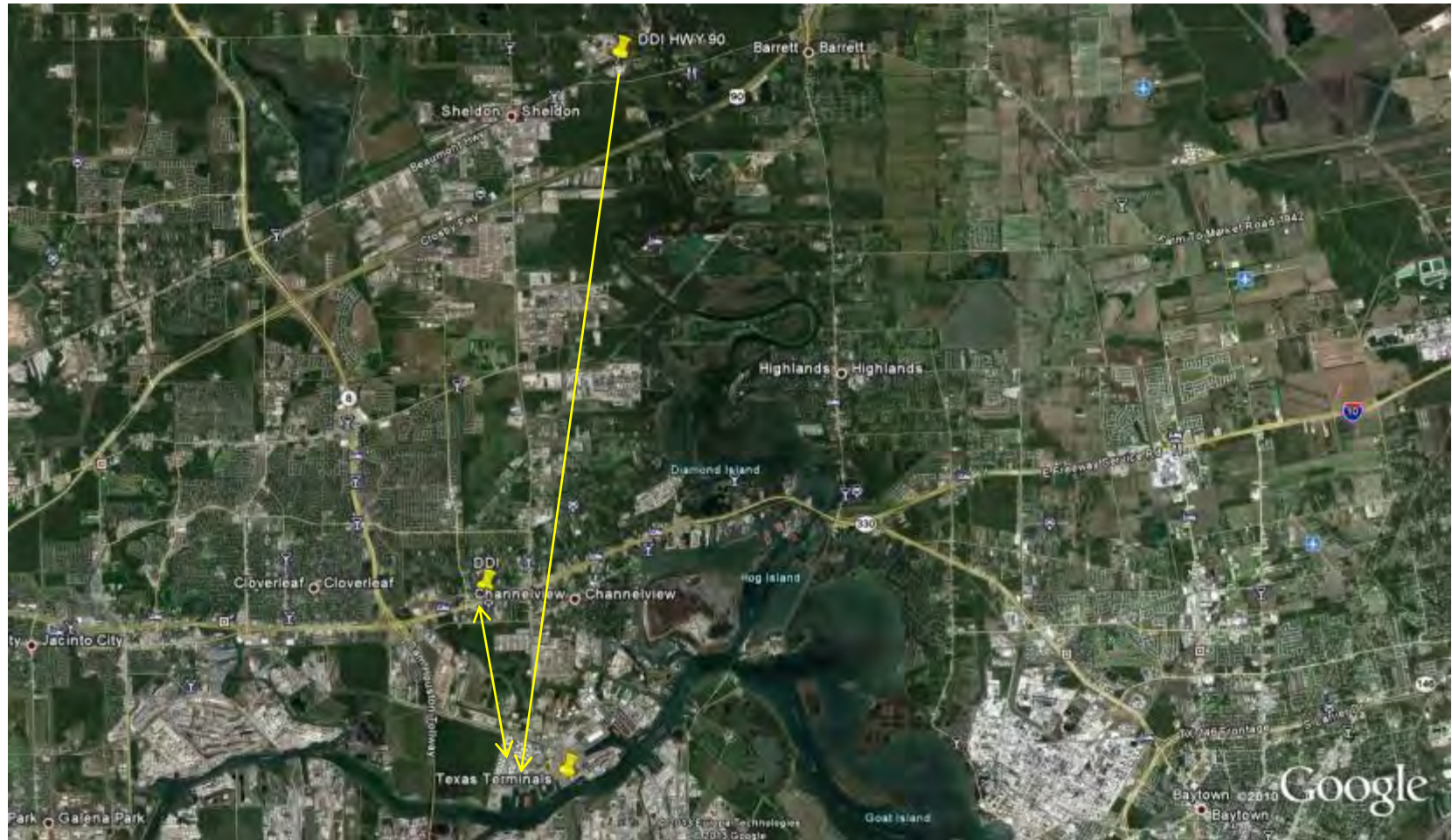


HWY 90



- 255,000 ft² - under insulated roof
- 76' tall high bay
- Test Tank
- Barge dock coming
- Rail spur
- 23 Acres

HWY 90 – Channelview – Texas Terminals



- 10 minutes from Channelview
- Another 3 minutes to Texas Terminals
- The Port of Houston.

Hwy 90



18511 Beaumont Highway aka old Tx-90
Houston Tx.77049

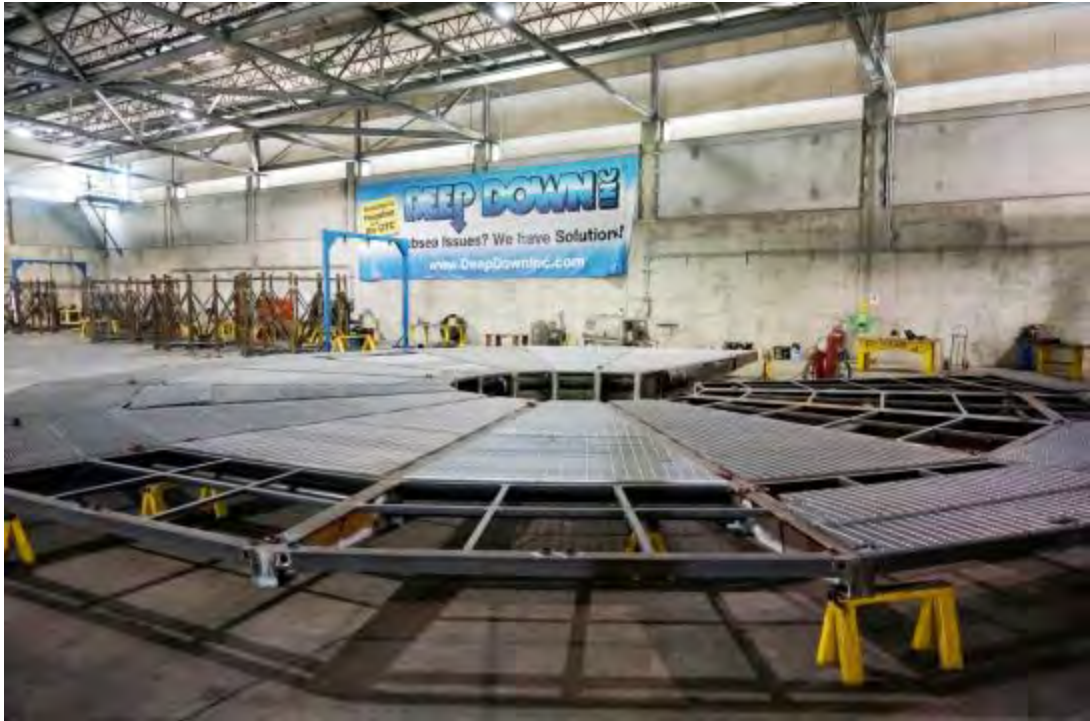


Our primary location
215,000² under roof
20 Acres

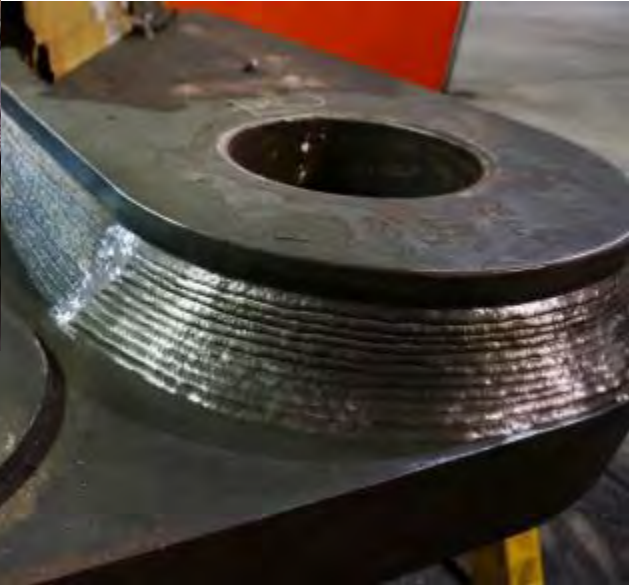
Assembly



Service



Fabrication



Offices



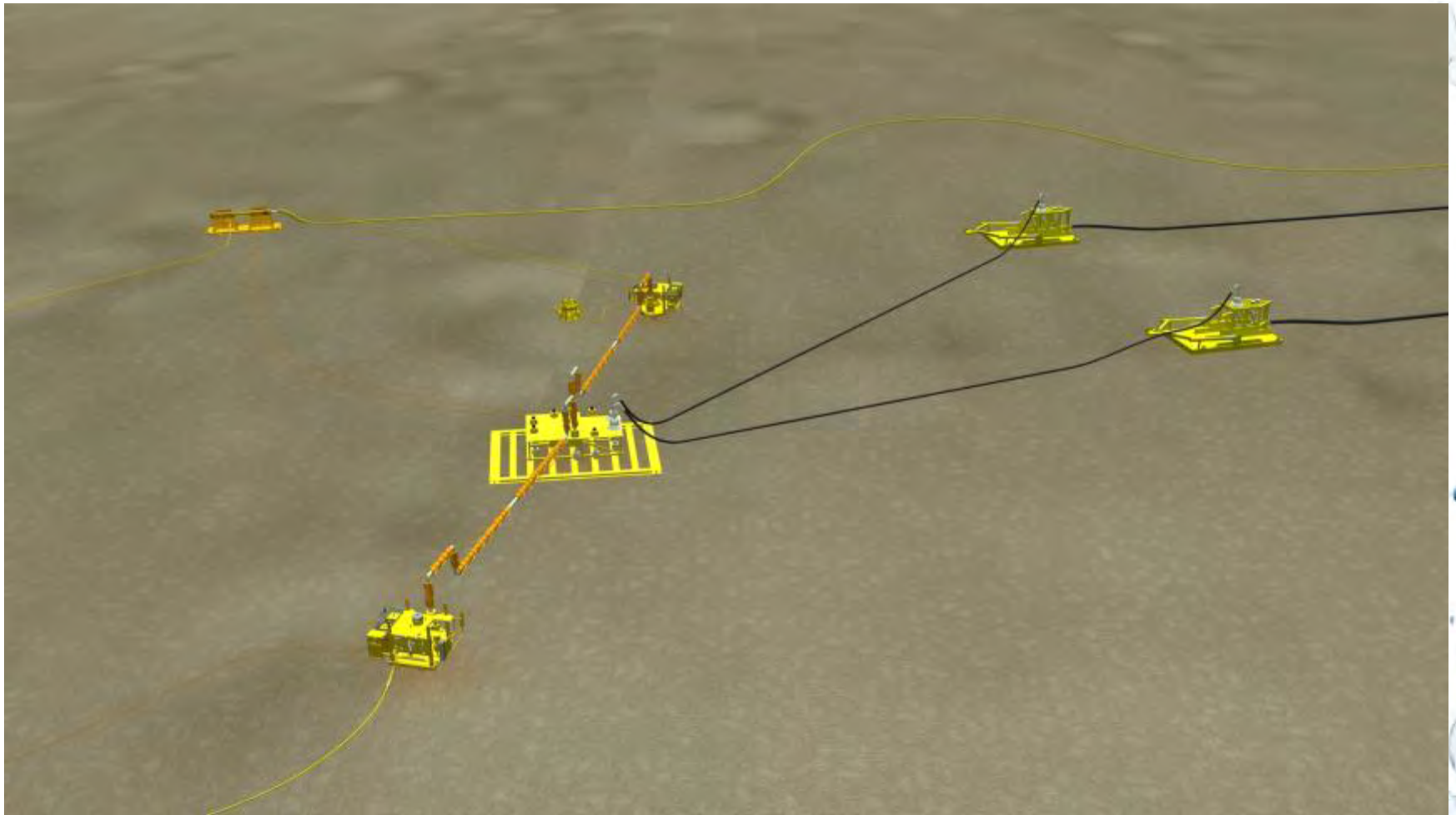
Engineering - project management - service, 2 - large conf.rm., client offices - break-room, and more to serve our valuable clients

More About Products & Services

Umbilical Termination Assemblies

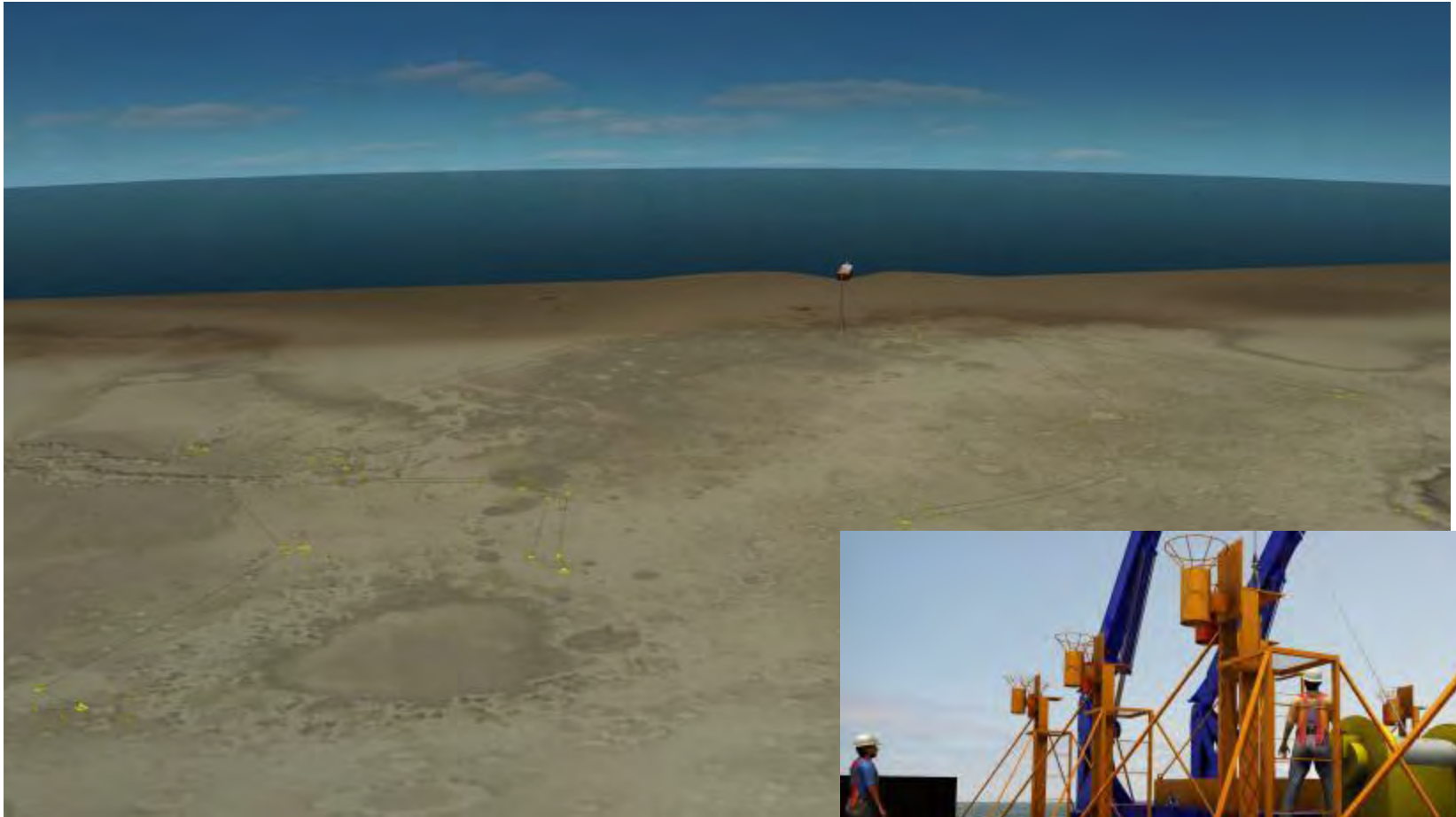


DDI Supporting in Distribution Components



- Easier to Install
- Could reduce subsea Architecture

Modeling and Animation Services



- Project is fully modeled
- Vessels and DDI equipment Modeled
- Animation Services

SAMs



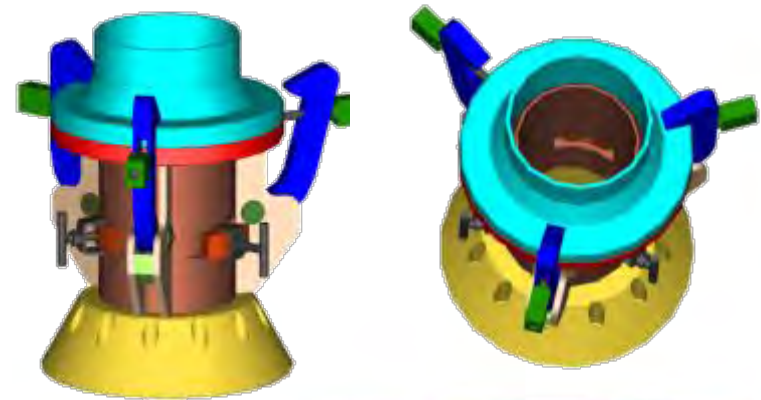
UTAs –Bend Limiters

- Designed to fit flying leads
- Mold designed in house, local fabrication
- Parts manufactured in Texas
- Quick availability, better prices
- Steel bend limiters for larger umbilicals



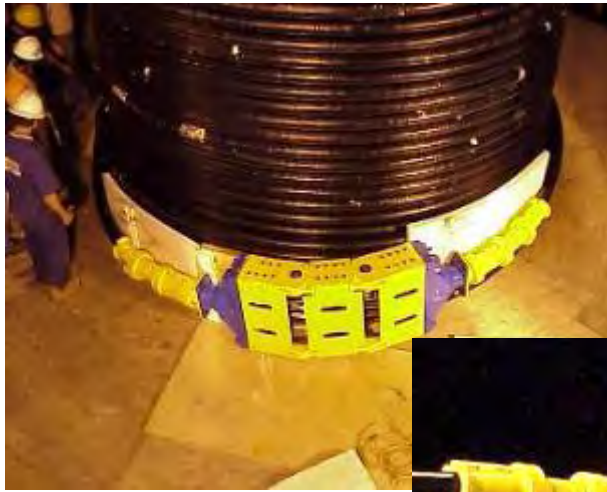
BS (Bend Stiffener) Latcher™

- Designed, built, and tested in two weeks
- Requires only standard flange on end of I-tube
- Can be made for any size
- No kink-point between BS and Bullnose

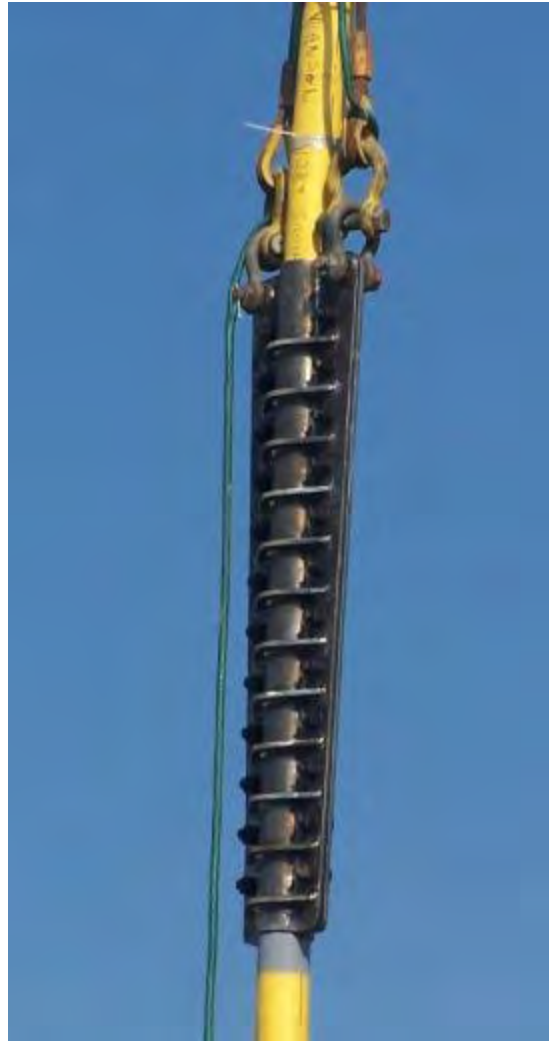


Compliant Splices

The Deep Down Compliant Splice™ connects two separate umbilicals of equal or unequal sizes and allows them to be easily deployable and pass directly over the lay shoot into the water.



Umbilical & Riser Clamps



- Contingency
- Umbilical Handling
- ROV Intervention
- Riser AUX & MUX
- Riser Thrust Collars

Testing, Monitoring & Commissioning

- Triplex Pumps
- Displacement Pumps
- Transfer Pumps
- Pneumatic Pumps



Fly-Able RDCs



Deployment frames



Loose Steel Flying Leads (LSFL)

Flying Leads



Flying lead Track 600 indoors



22 Line Flying Leads



Shell CTR 2286

- Nearly completed in this photo, ready for our installation team to go offshore for commissioning process.



MSCM Gorgon CTR 2261

- 20 LSFL'S
- 11 RDC's



BP Galapagos CTR 3328

- Umbilical holdback clamp set up on the pull test frame for testing. This clamp was designed to be installed vertically and bolted up with an ROV. Done and on time and budget.



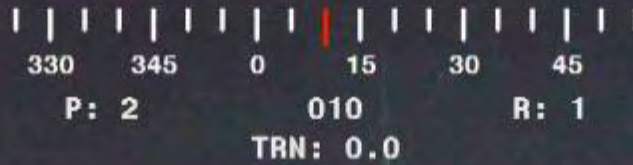
GE- CMUs - CTR 3024



RIV Products and Services

RIV UTA

CAGE
THR: 644
DPT: 708
HDG: 097
TRN: 0.0



ROV
DPT: 647
ALT: 95
BTY: 743



OCEANEERING

Millennium 64

Dive Number: 9

01 FEB 14

07:15:46

RIV & UTA



RIV & UTA



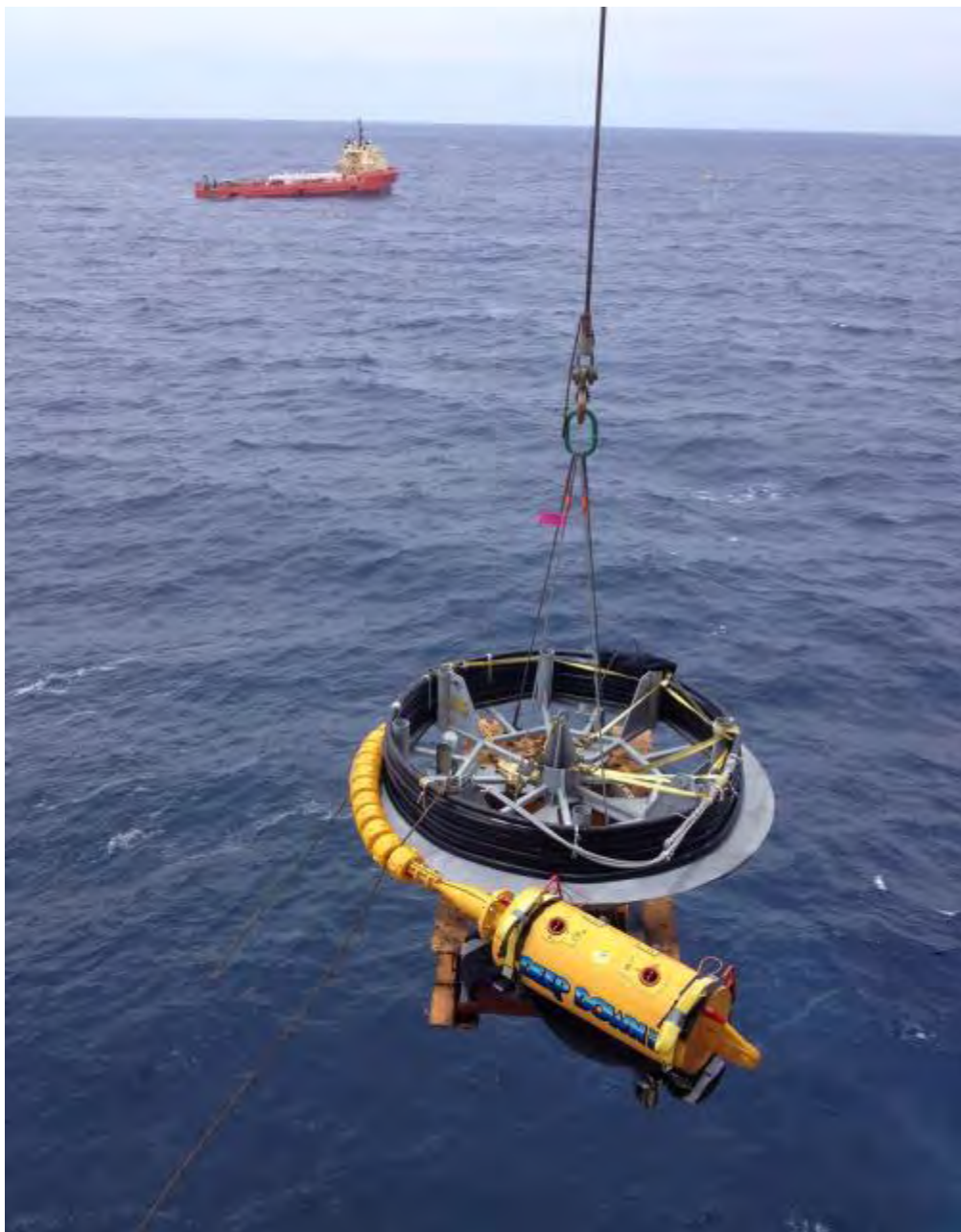
UTA



RIV on HDU



RIV on TLP DDI NHU



RIV on column top



RIV



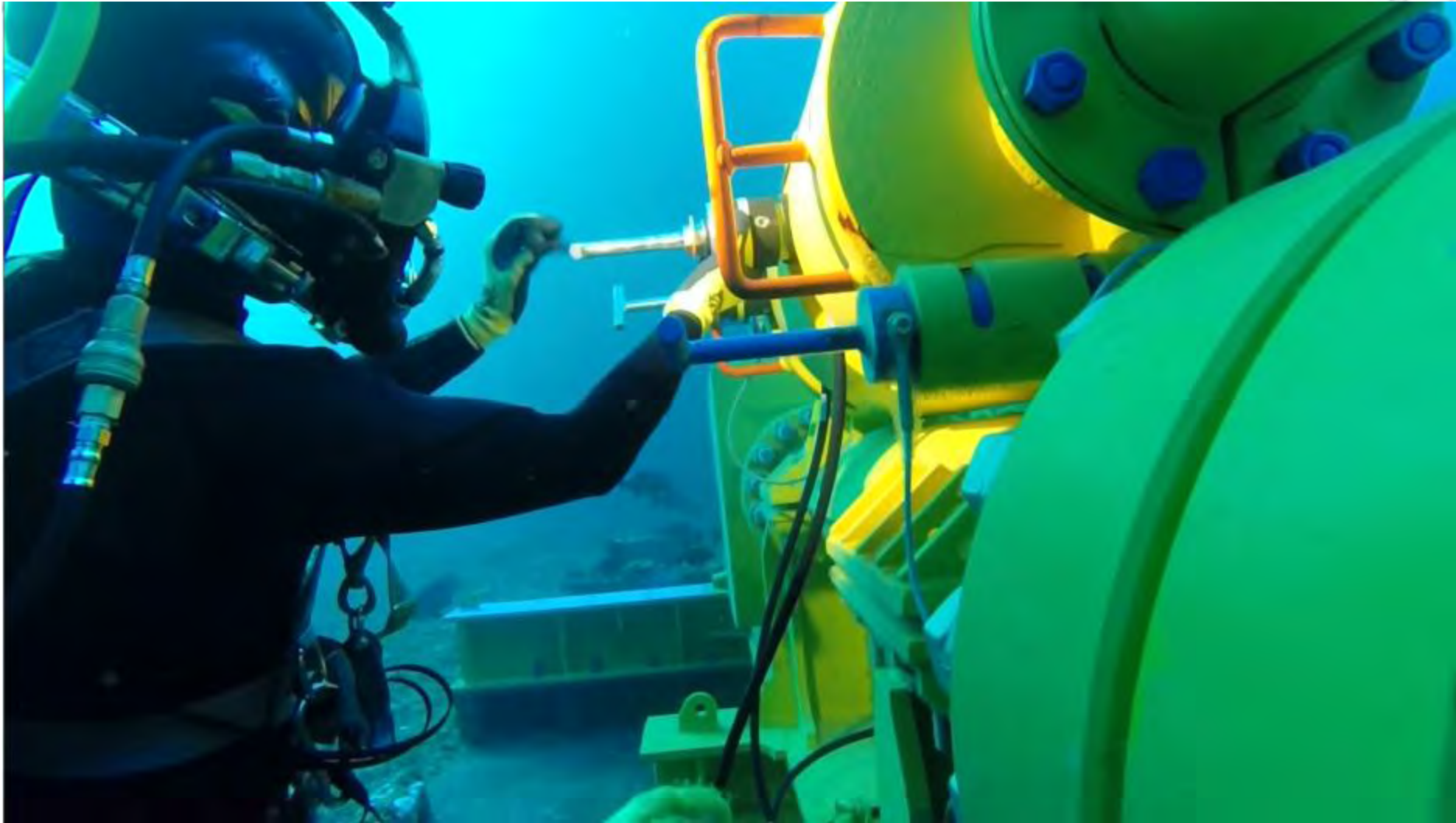
RIV



RIV



RIV



DDI NHU for RIV



RIV



RIV



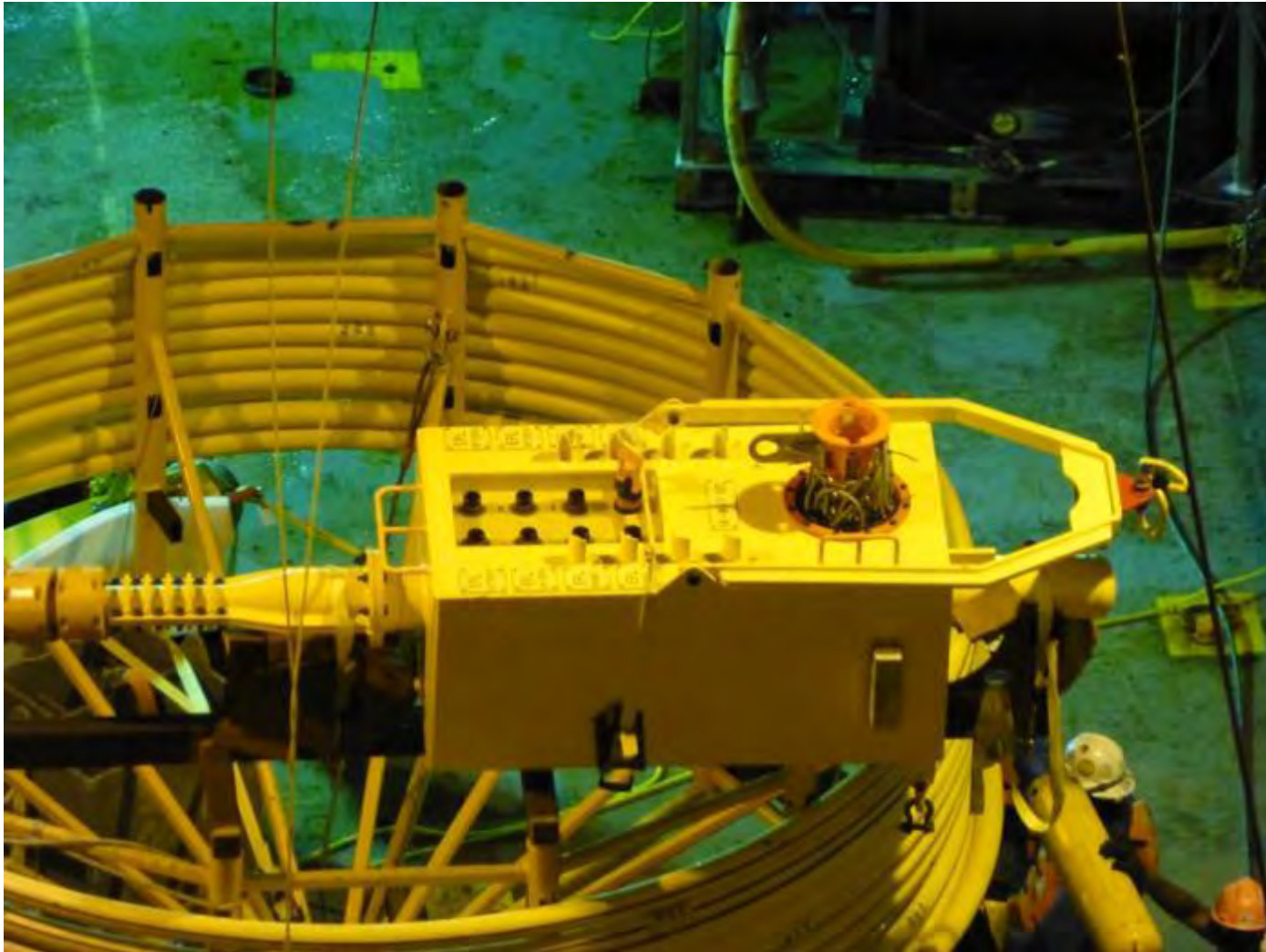
RIV



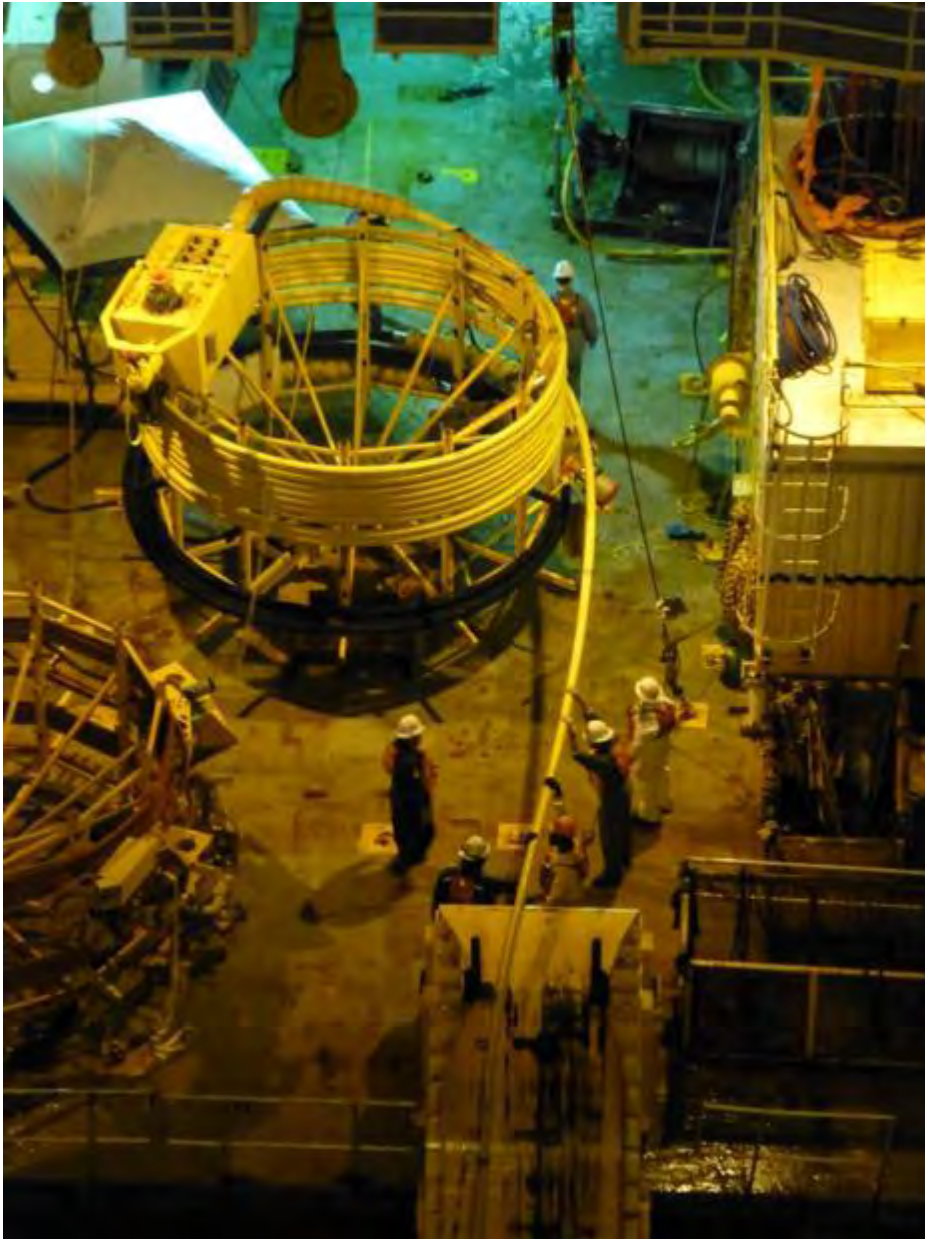
RIV



RIV



RIV



RIV

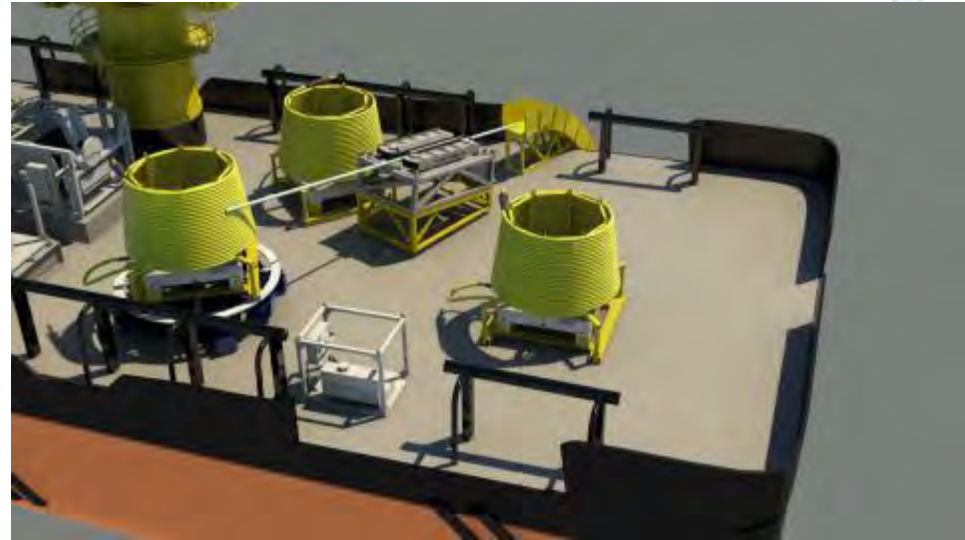
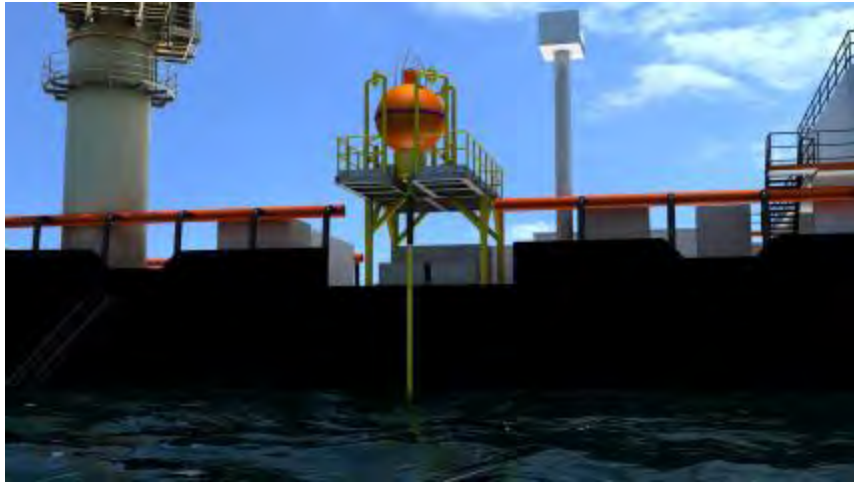




RIV at shipyard Korea Shell Olympus TLP

Installation Services

DDI Modular System + Chartered Vessel = Max Capability using local content



- Early Production
- Flying lead – Infield – Rigid Jumper
- ICCP - LOFS

ADCP Installations



RMS Installations



Umbilical & Flexible Flowline Installations – DDI 200T Mini Carousel



Interesting Projects

Completing Whitehill

High Client³ Project



Spooling mooring ropes onto reels

Rope arrives in 20 containers



Use RDC as 3 ton holdback



Using a deployment cartridge to do the job!

DDI build-20 reels



Reels are changed out



Batch of Reels-ready to ship



Loaded Trucks



Convoy is ready to depart our 90 facility. Weather protected mooring ropes will be dry upon delivery!

Chevron Containment Boxes special solution for a specific need

118 Containers arriving 90



Boxes return from coater and delivered to 90 for completion



Designed from the beginning to be containerized for ease of shipping

Final Prep and install into container - ship



Future Developments

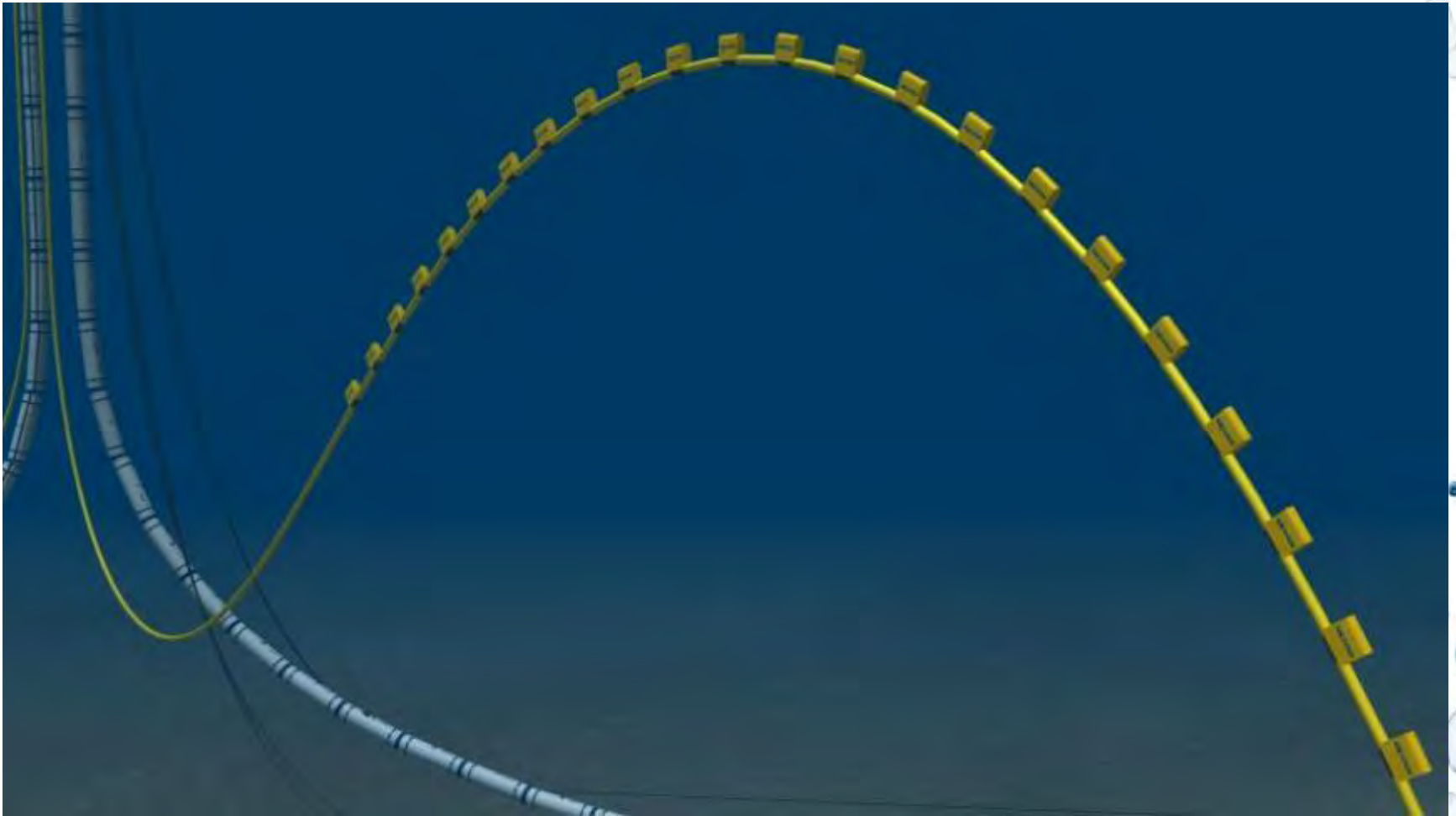
Distributed Buoyancy Modules



Top Mounted Distributed



New Distributed Buoyancy



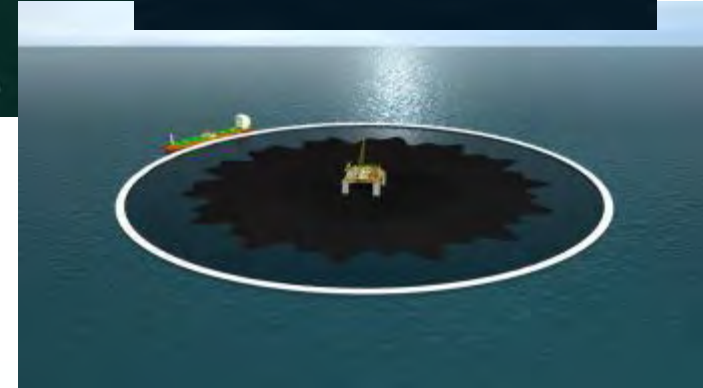
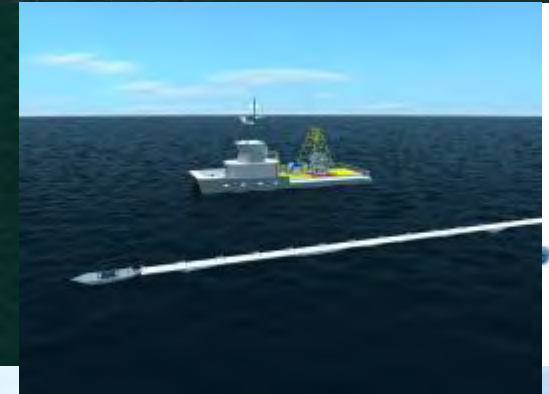
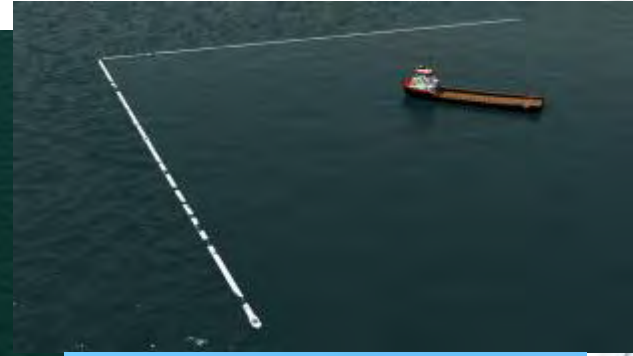
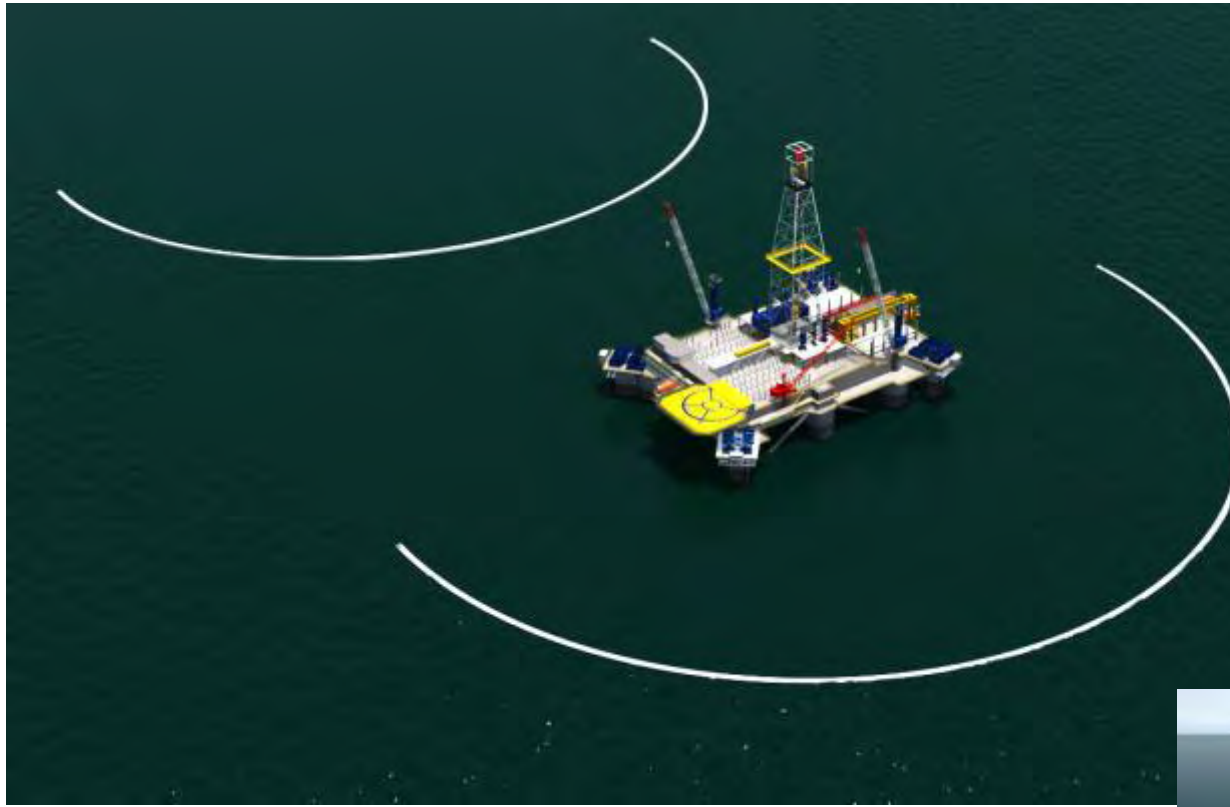
- Hinging fast installation design allows installation over conventional lay chutes and requires approx. 1 minute per module to install

Hwy 90 - Future Barge Dock about to start construction



The river leads directly to Galveston Bay and the rest of the World. Navigable all the way!

DDI Atoll System Patent Pending



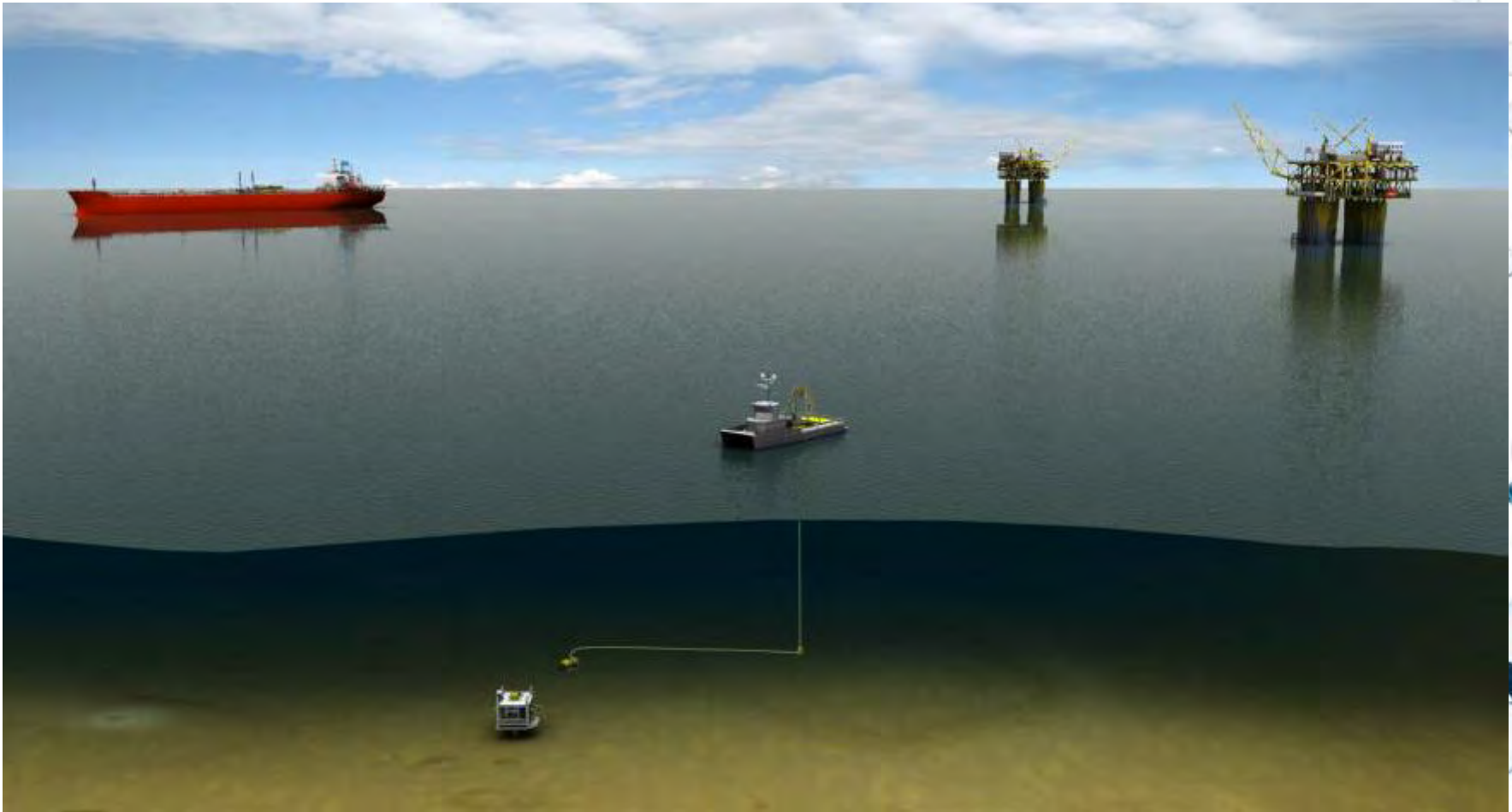
- Allow field vessels to work in rougher seas
- Built in catch and collection system for spills
- Mobile and DP option

WorkCat



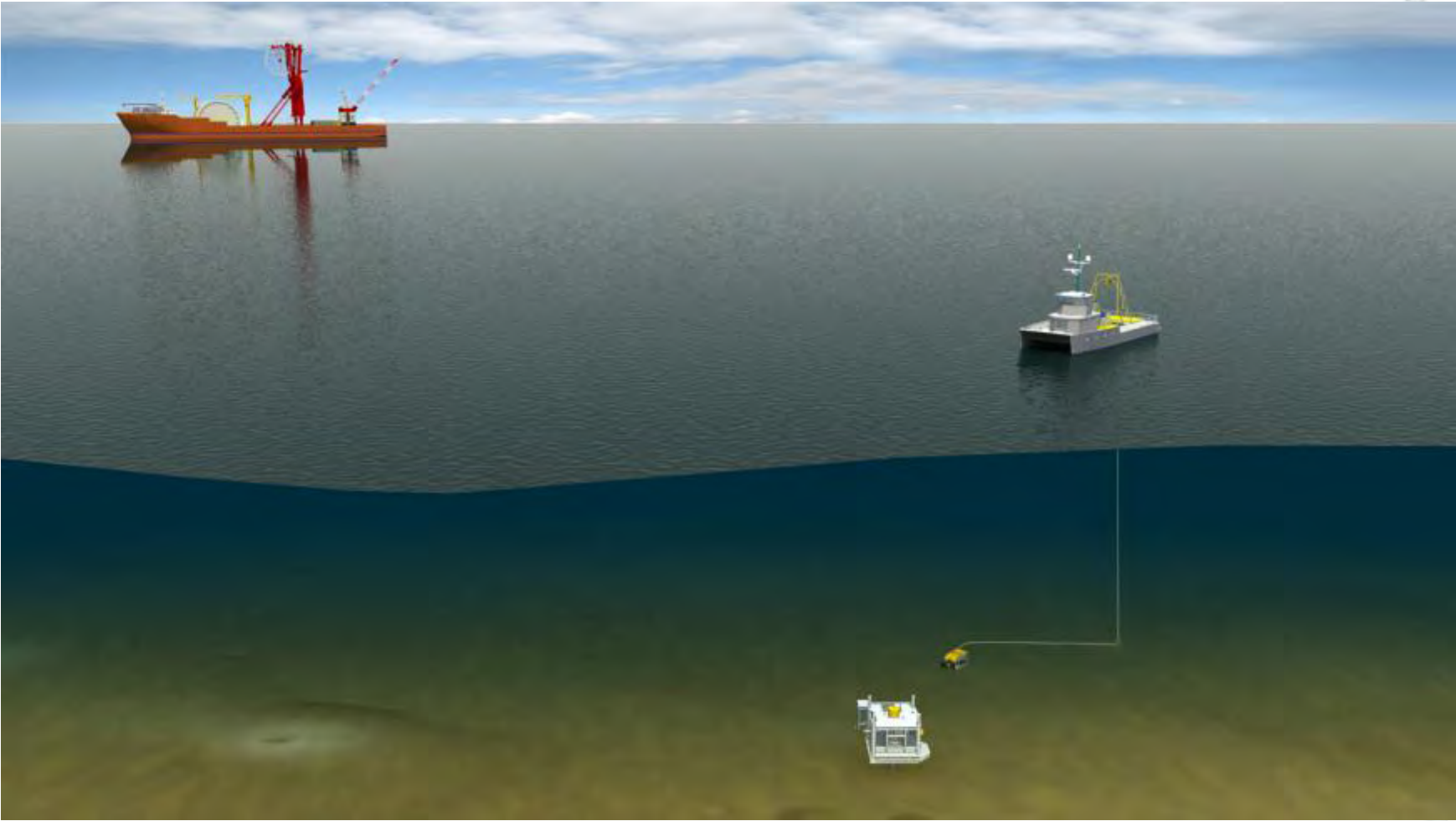
- Cross trained Marine and ROV crew
- Work Class ROV with rough weather LARS for ease of launch and recovery
- Crew returns to mother ship at the end of the day or to shore
- DP and 25 knots

WorkCat Supports field



- Video telemetry to FPSO
- Work Class ROV or Observation at fraction the cost
- Crew change at the end of the day

Mother Ship performs one Task – Work Cat performs others

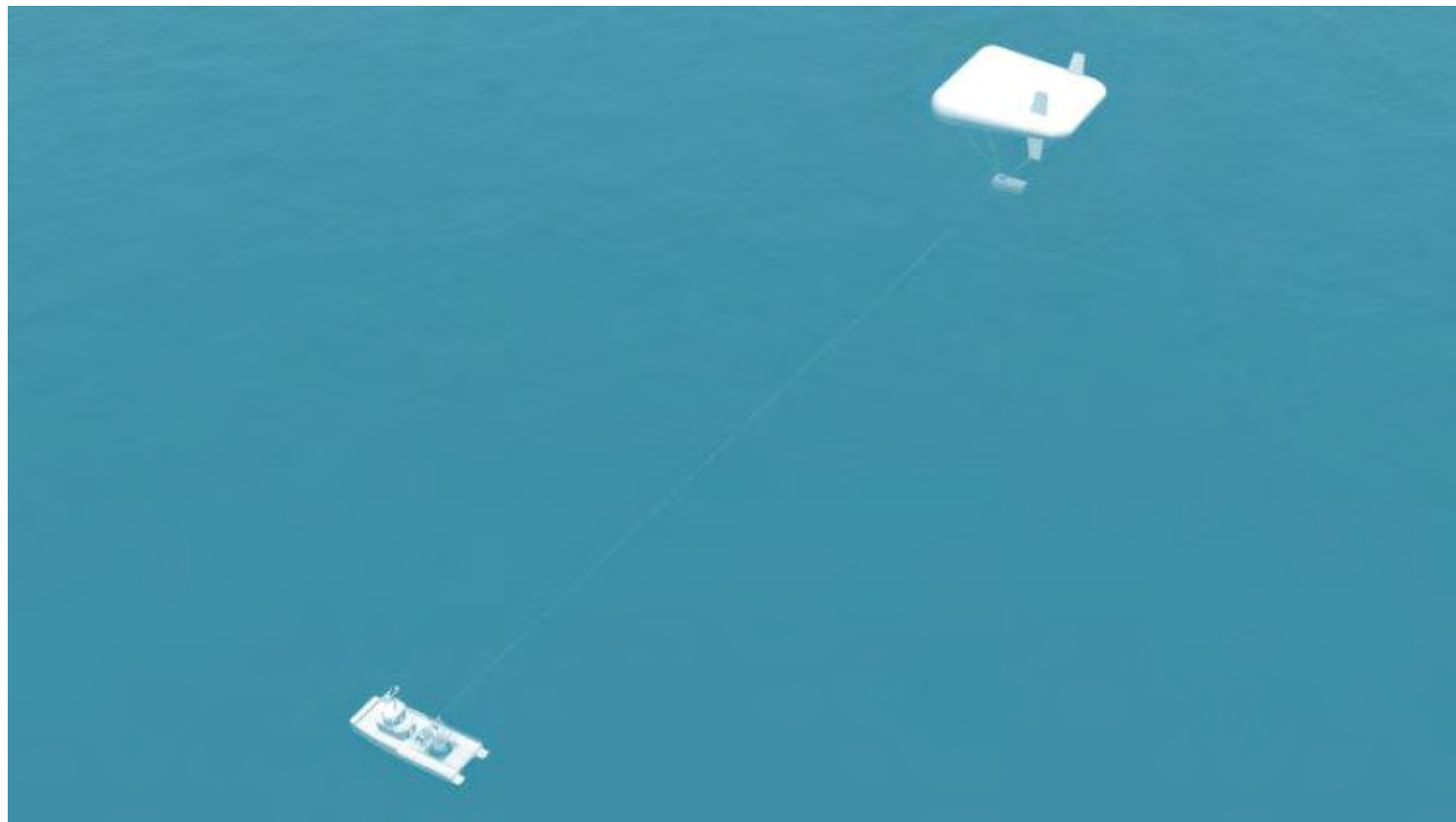


Work-Cat with Star Tower



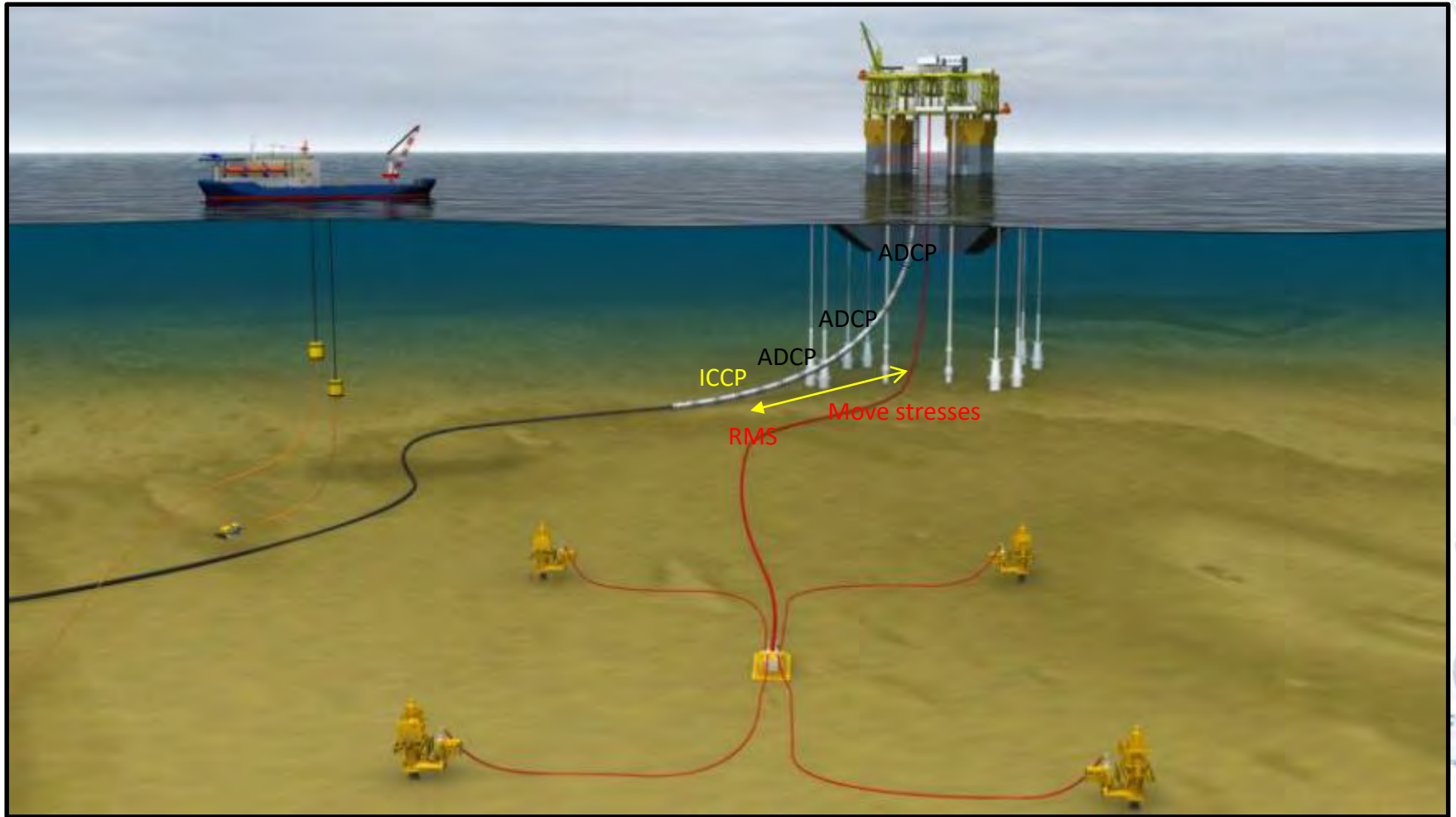
Security or spill observation and telecommunication for the ROV operation as well. Cell site repeater is not impossible. Many options avail.

Double Duty ROV/Aerostat winch on Work Cat with automatic disengaging drums allows ROV and Star Tower to be deployed and recovered simultaneously and yet adjusted individually

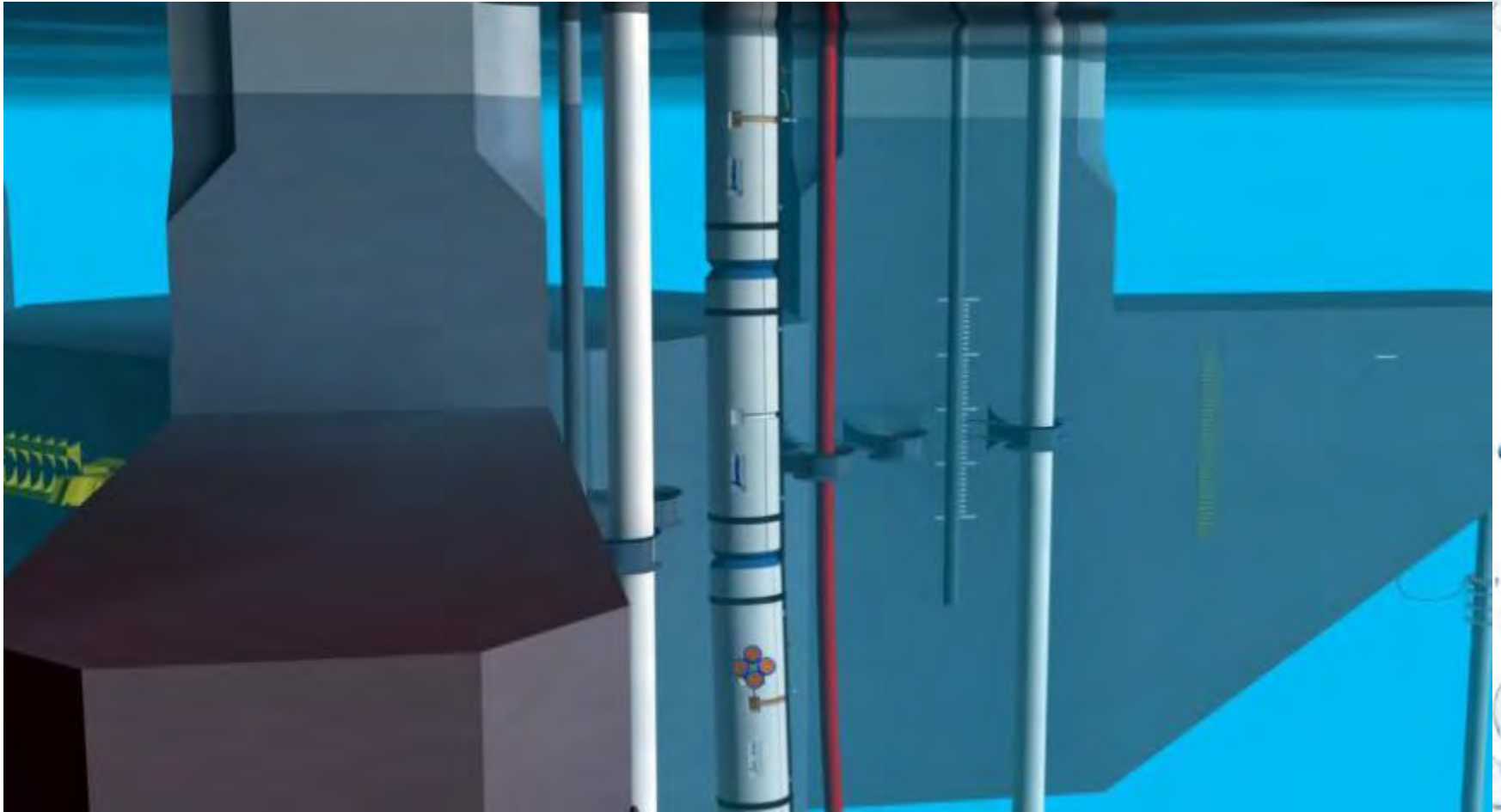


INTELLIGENT RISER

Patent Pending

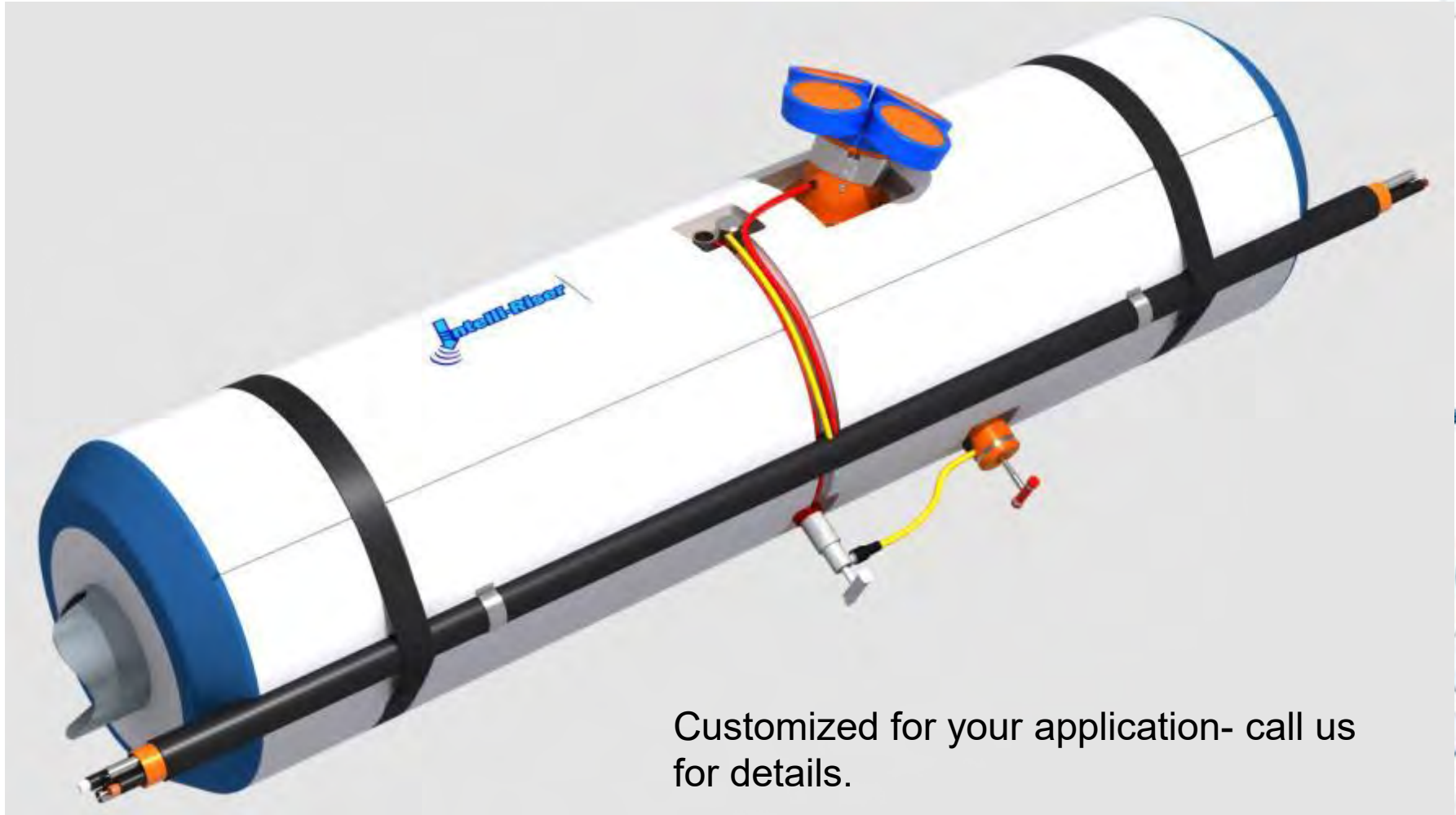


Riser is lightened and carries all Intelligence



Buoyancy for weight reduction and telemetry for decision making.

Intelligent Riser Module



Customized for your application- call us for details.

Summary

- DDI – Can establish a service base at client’s facility when required – Trinidad, Australia – West Africa- GOM- SE Asia- etc. Wherever you need DDI.
- Add the Mobile NHU facility- in country, convenient to deployment field.
- Offer the Core services in your entire project
- DDI - can give more capability with less personnel and equipment utilizing the DDI modular capability and with senior management in country and employing local content
- DDI - opens business entity in Brazil
- DDI – Has sold the Channel view facility and is consolidating in to DDI Hwy 90 facility of 215,000 ft² and 20 acres.and adding 40,000 ft² under the room and 3 more acres for a total of 255,000 ft² by and 23 acres
- DDI offers DP work vessel for an Offshore Workshop with full equipment spread including carousel and Opti-deck to provide full recovery – repair – testing – and re-installation of the subsea system
- Future services can be incorporated to further increase client capability:
 - Work Cat – Work Class ROV at fraction the cost operated by DDI and alliance partner, Meridian Ocean Services
 - Star Cat – Security – Data transfer
 - Atoll – Increase working days and remediate spill in a fraction of the time